



RideShare Online and Ridematching

The RideShare Online Ridematching Program will find people who live in your neighborhood, work near you, and want to travel around the same time as you.

Since you and your potential carpool partner get to define your schedule, you have the flexibility to carpool for as many days a week as your schedules allow. You and your carpool partner can decide where to meet, what radio station you're going to listen to, and whether or not you talk before that first cup of coffee.

How to create an account on Rideshare Online

Registering for Go Redmond:

- 1 Go to GoRedmond.com and click "Register"



- 2 Set up your account using your work email address so that you can join your company's network.

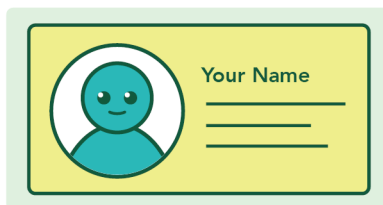


Ridematching on Go Redmond:

- 1 Go to Ride Match/My Trips then click "Add trip"



- 2 Enter your commute information and make your profile public

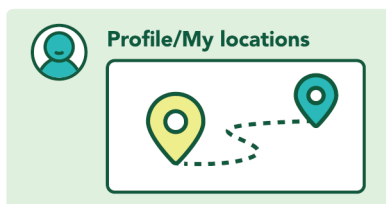


- 3 Contact your potential matches

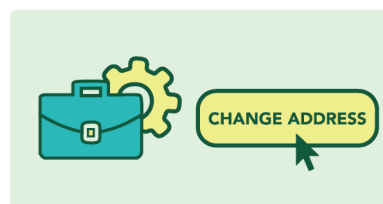


How to Join Your Company Worksite:

- 1 Log in to your account and go to "Profile/My Locations"



- 2 Click "Change Work/Campus Address" next to the work icon.



- 3 Check "I want to search using a name" and select your worksite network. You can also search by address.

